

## **MatriXcan Panel**

Revolutionary MatriXcan Panel for capturing best quality of images

## **MatriXcan Mapping**

**BPS**

Bipolar Sampling

**PRS**

Partial Response  
Synthesization

**PNZ**

Pixel Normalization

**AGS**

Anti Ghosting Scan

## **MatriXcan Extracting**

Extract most minutiae you've ever seen

# MatriXcan™

## **REVOLUTIONARY TECHNOLOGY**

Differing from two kinds of typical fingerprint verification solution, optical and capacitive, iMD's world-leading technology MatriXcan™ is able to capture the best quality of fingerprint images, to extract most minutiae you have ever seen, and to output with outstanding speed and security.

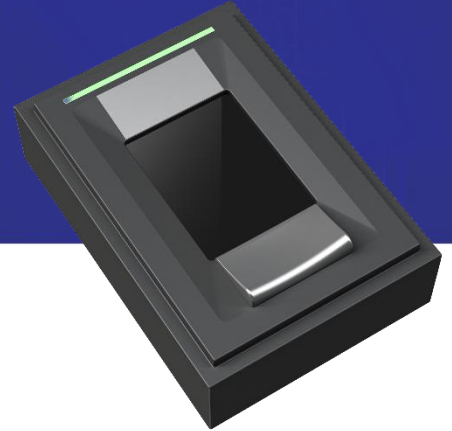
MatriXcan™, the extremely clear and distinct images captured on dry, worn and wet fingers makes the high possibility to adapt all sorts of finger conditions without exceptions.

ANSWER IS  
YOUR ANSWER

# INDICUS

## GF421DM / GF421DM-S

Fingerprint Module  
Easy Integration



### FEATURE

- Remarkable GF Series Fingerprint Sensor!
- 1 finger registration/verification
- Outstanding image quality on dry/ worn/ wet fingers
- Low power consumption
- Latent print, UV, strong light resistance
- Hard surface for scratch protection
- Slim and compact design
- LED status indicator
- Live Finger Detection
- Excellent ESD performance
- High security and reliability
- Ingress protection IP65
- Encryption Function (GF421DM-S)

### SPECIFICATIONS

Item	Parameters
Model Name	GF421DM / GF421DM-S
Image Size	300 Pixels x 400 Pixels
Sensing Area	15.24 mm x 20.32 mm
Resolution	500 dpi / 256 grayscale
FPS	Flats: 11/sec
Led status indicator	RGB
LFD	Supported
Power Consumption (read image)	95 mA
Power Consumption (standby)	80~90 mA
Interface	USB 2.0 Full Speed
Device Size	48.2 mm x 33.8 mm x 13.5 mm
Device Weight	17.1 g
ESD Level	IEC 61000-4-2 Level 4
OS Support	Windows7+; Linux(X64, ARM); Android 4.2+
Certifications	FBI: PIV (FAP20) / FCC / CE / RoHS / RCA / UV
IP Rating	IP65
Temperature [Operating / storage]	-10°C ~ +55°C / -40°C ~ +80°C