

ANSER IS
YOUR ANSWER

imd
IMAGE MATCH DESIGN



FABALIS

GF631BR
READER DATASHEET

We are committed to developing sensing technology and providing customers with innovative and diverse sensor products including modules and readers. Our MatriXcan provides the most advanced fingerprint identification extraction technology, providing advanced and convenient fingerprint collection.

Table of Contents

1. REVOLUTIONARY TECHNOLOGY.....	3
2. FEATURE	4
3. PRODUCT DETAILS.....	5
4. USB Type-C CONNECTOR	6
5. GF631BR 2D DRAWING	7
6. SPECIFICATIONS.....	8
7. REVISION HISTORY	10

1. REVOLUTIONARY TECHNOLOGY



Differing from two kinds of typical fingerprint verification solution, optical and capacitive, iMD's world-leading technology MatriXcan™ is able to capture the best quality of fingerprint images, to extract most minutiae you have ever seen, and to output with outstanding speed and security. MatriXcan™ the extremely clear and distinct images captured on dry or worn fingers makes the high possibility to adapt all sorts of finger conditions without exceptions.

2. FEATURE

- Remarkable GF series fingerprint sensor!
- 1 finger registration/verification
- Optimal fit for the thumbprint
- Live finger detection
- High security and reliability
- Outstanding image quality on dry/worn fingers
- Low power consumption
- Latent print, UV, strong light resistance
- Hard surface for scratch protection
- Excellent ESD performance
- RoHS compliant and low-halogen

3. PRODUCT DETAILS

1. MatriXcan Panel



3. LED indication

2. Finger Detect Bezel

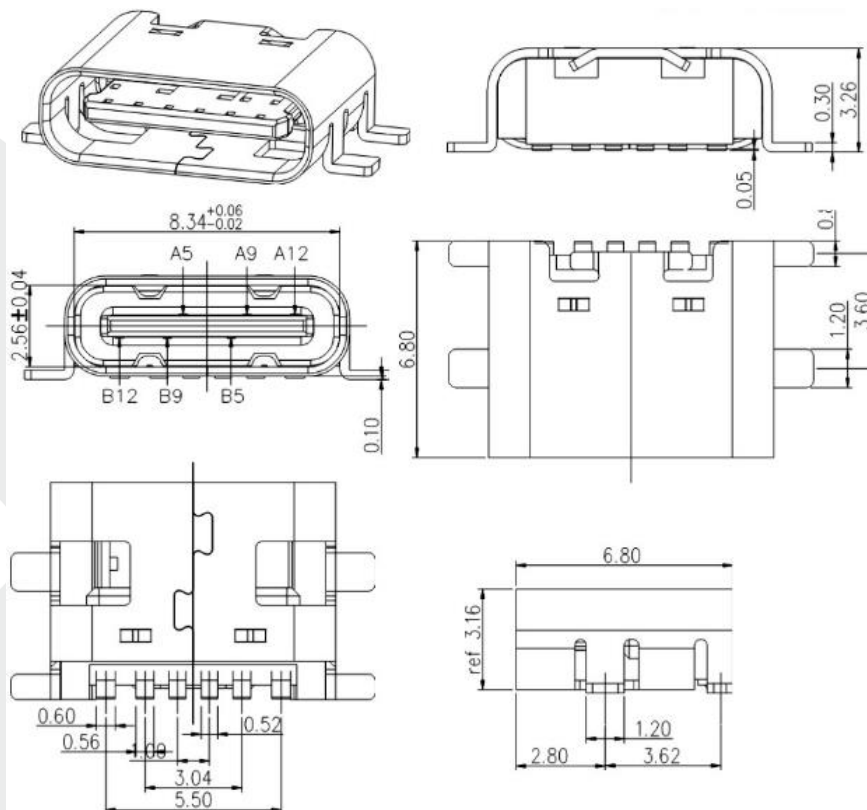


4. USB Type-C connector

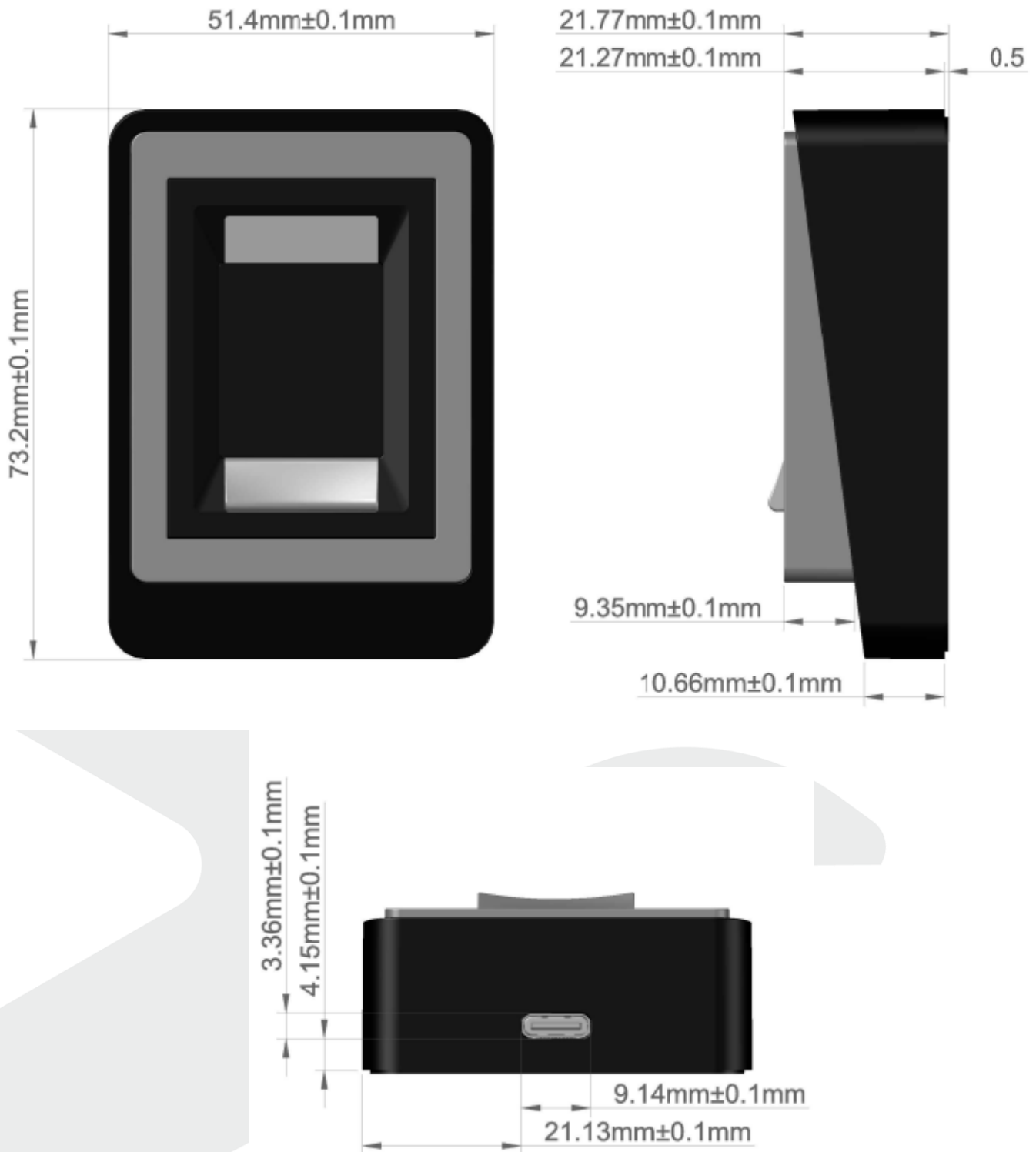
- 1. MatriXcan Panel:** Sensing area 20.32 mm x 25.4 mm
- 2. Finger Detect Bezel:** Detects whether a finger touches the product and includes an anti-counterfeiting function
- 3. LED indication:** Indicate to users by light signal
- 4. USB Connector:** USB 2.0 Type-C connector

4. USB Type-C CONNECTOR

Pin Number	Pin Description
1	VBUS
2	D-
3	D+
4	Ground
5	Shield GND



5. GF631BR 2D DRAWING



6. SPECIFICATIONS

General Specifications	
Model Name	GF631BR
Image Size	400 Pixels x 500 Pixels
Sensing Area	20.32 mm x 25.4 mm
Resolution	500 dpi
Grayscale	256 (8bit)
FPS	Flats: 2/sec
LED indicator	RGB
LFD	Supported
Interface	USB 2.0 Type-C connector
Power Consumption (read image)	85 mA
Power Consumption (standby)	65~75 mA
ESD Level	IEC 61000-4-2 Level 4
Dimensions and weight	
Device Size	73.2 mm x 51.4 mm x 21.77 mm
Device Weight	47 g

Housing Material	Steel
OS Support	
Windows	Windows7+ or later
Linux	Linux(X64, ARM) or later
Android	Android 4.2+ or later
Certifications	
FBI	PIV (FAP30)
Environmental Specification	
Operating temperature	-10° C to +55° C
Storage temperature	-40° C to +80° C
RCA	200 cycle
Pencil Hardness	7H

7. REVISION HISTORY

Version	Date	Changes	Approved	Checked	Author
V1.0	3/22/2024	First Version	Colman	Hyde	Sam